



Western Health



Use of the Home
Assessment Profile as an
outcome measure to
review Occupational
Therapy practice within
Aged Care.

Presenter: Karen Kessner
Co- investigators: Megan Rumble
Adam Cefai

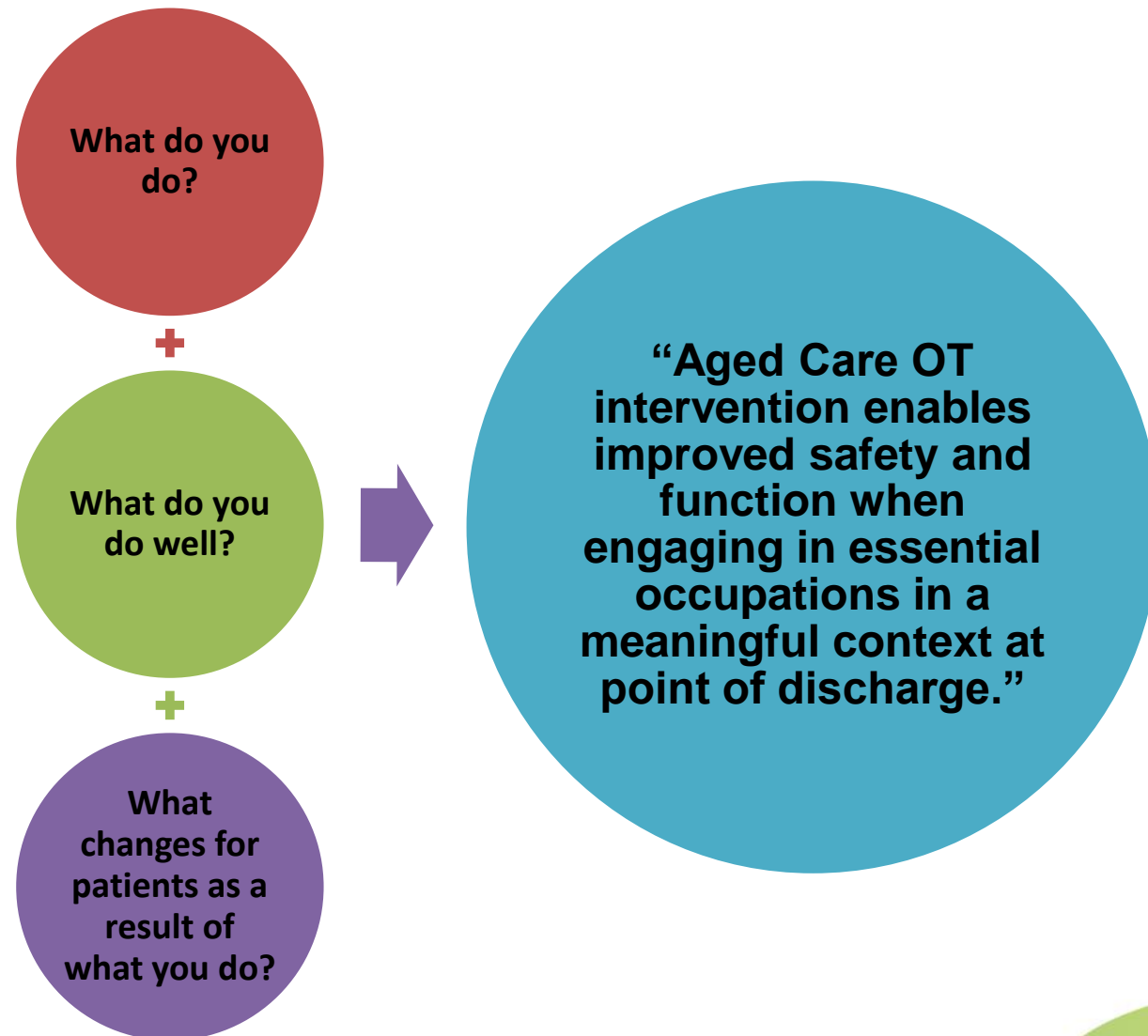
Background -Western Health OT



Context



Conceptual Definition



The Home Assessment Profile (HAP)

- Quantitative, performance based instrument
- Valid and Reliable Tool
- Hazardous person-environment encounters
- 8 areas of the home

Scoring the HAP: Hazard scores

Hazard Scores		
0	No Risk	
1	Low to Mild Risk	<ul style="list-style-type: none"> • Difficulty manoeuvring around item • Difficulty some of the time • Difficulty 10 to 40 % of time hazard encountered
2	Moderate to High Risk	<ul style="list-style-type: none"> • Difficulty manoeuvring around item • Difficulty most of the time • Difficulty 41 to 100% of time hazard encountered

Scoring the HAP: Frequency scores

Frequency Scores	
0	Never
1	Less than 1 time per month
2	Less than 1 time per week
3	2 to 3 times per week
4	1 to 2 times per day
5	More than 2 times per day

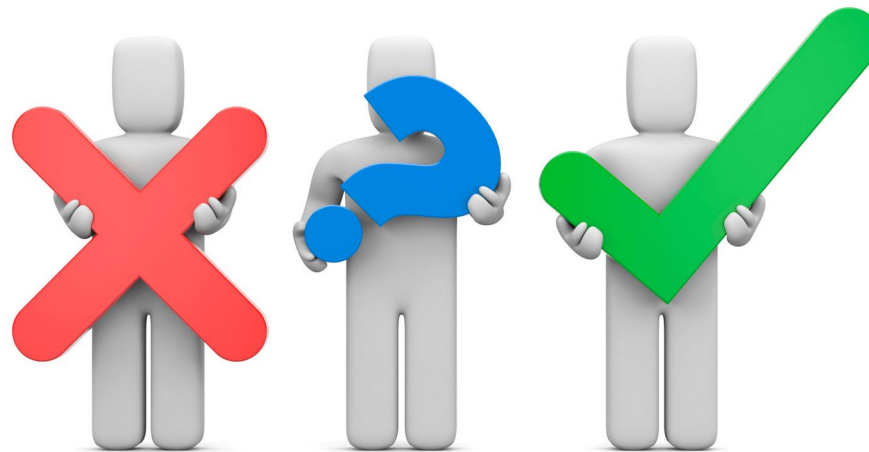
Method



- Training and Education
- 12 therapists completed 5 HAP's each
- Standard OT practice for Home Assessment
- Inclusion Criteria: Aged Care patient, 65 years and over
- Exclusion: under 65 years, Home Assessment for one specific intervention

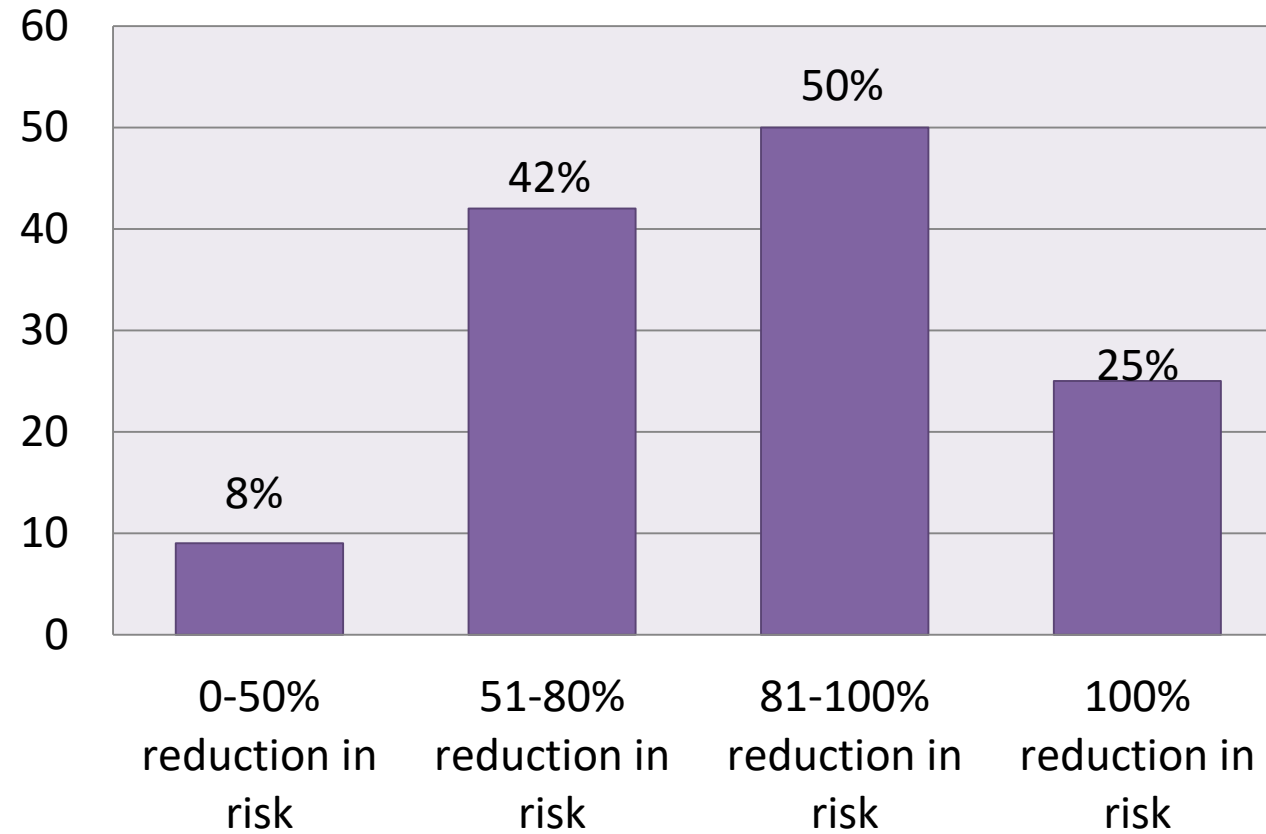
Results

- Risk reduction scores
- Frequency of recommendations in areas of the home
- Types and frequency of recommendations



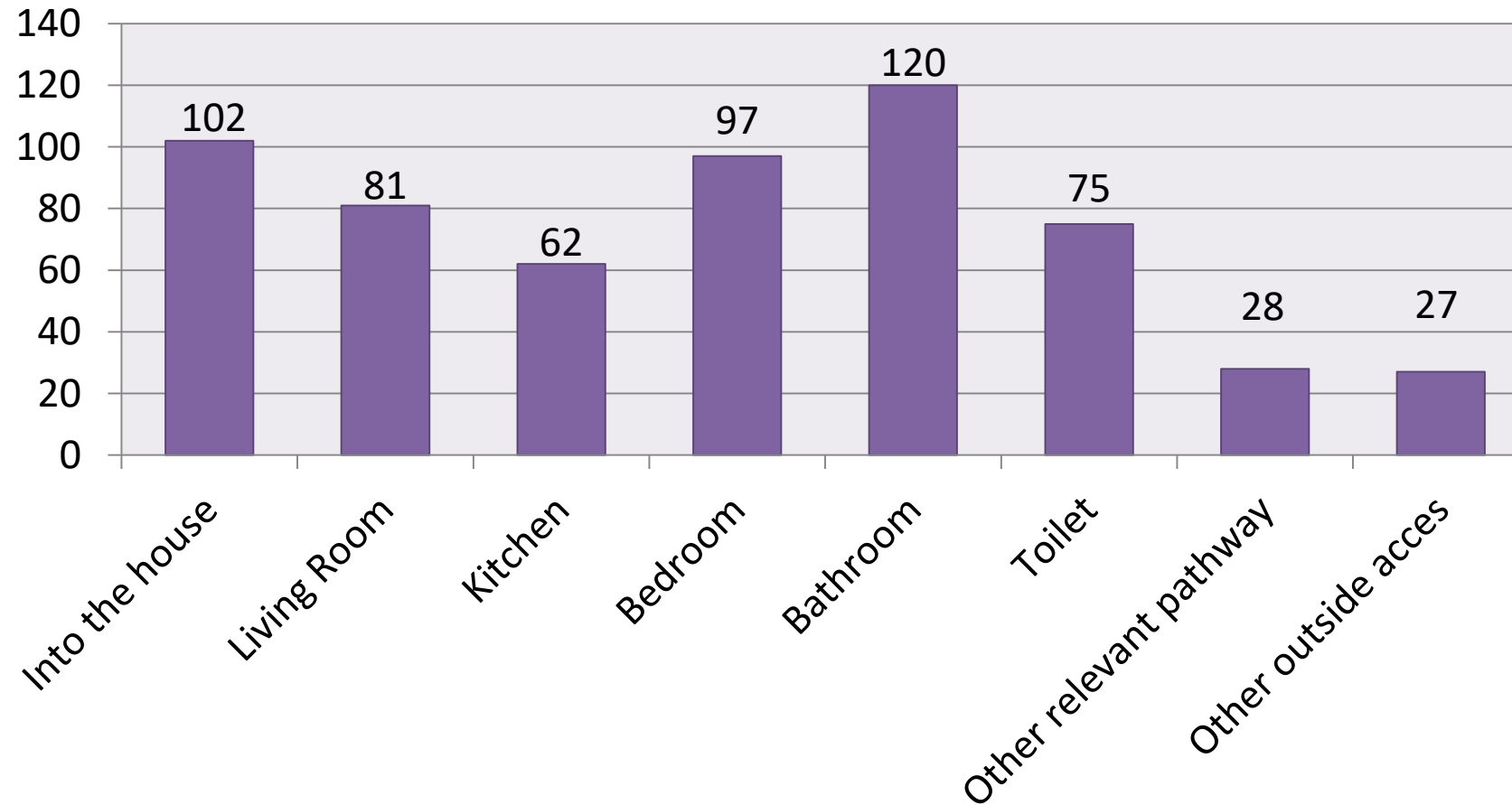
Results

Percentage of patients per reduction in risk category

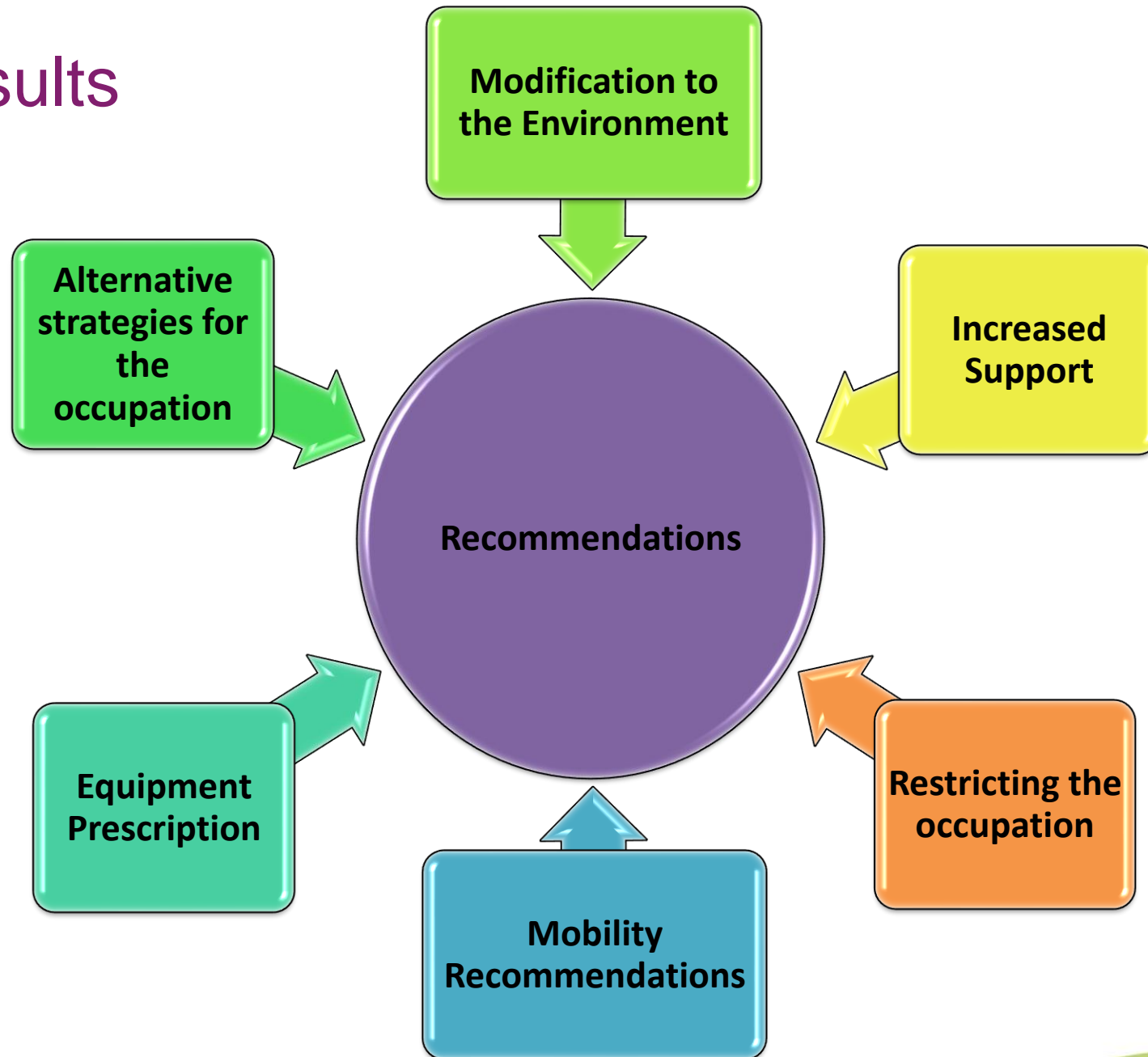


Results

Number of recommendations for each area of the Home

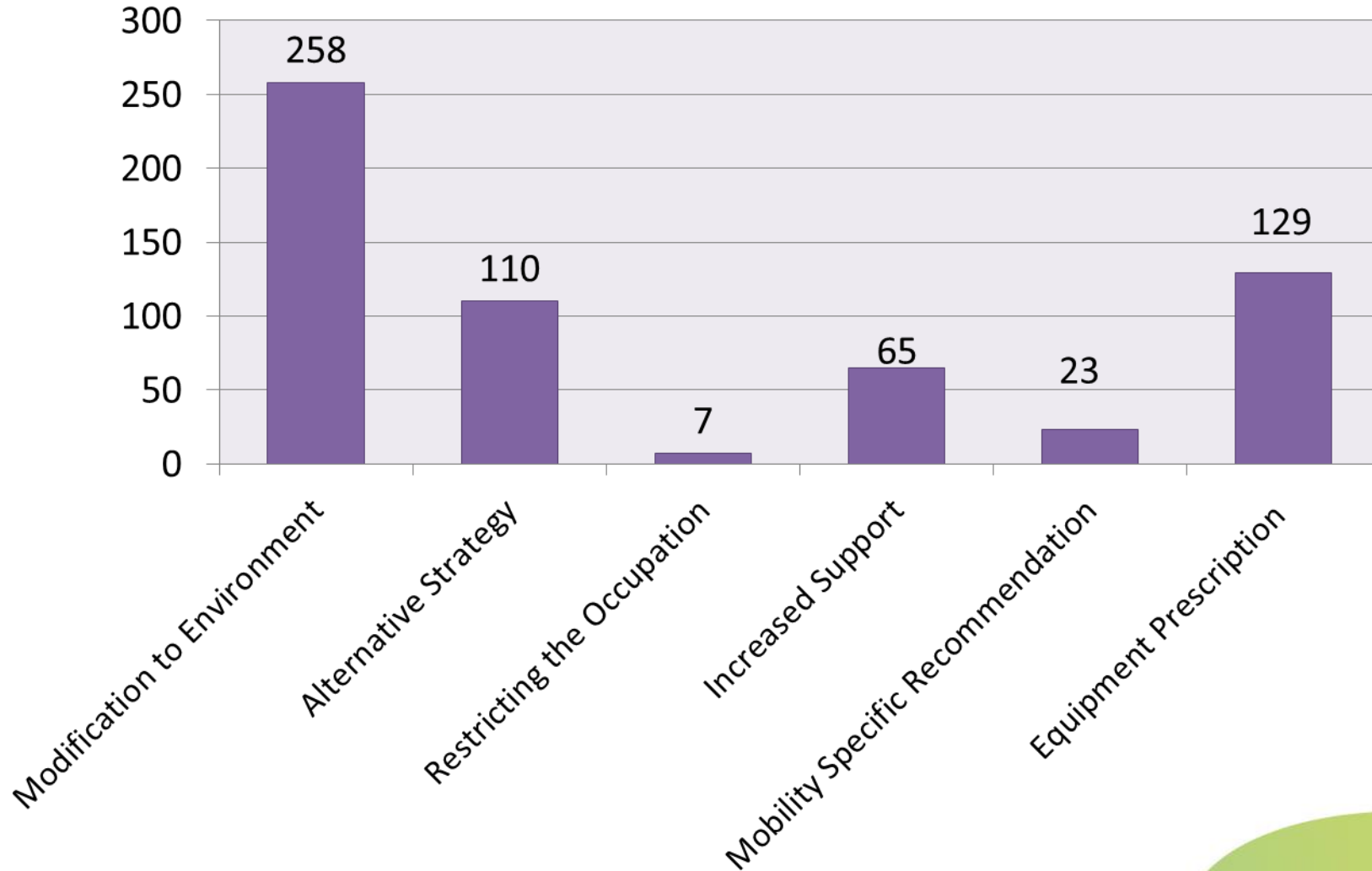


Results

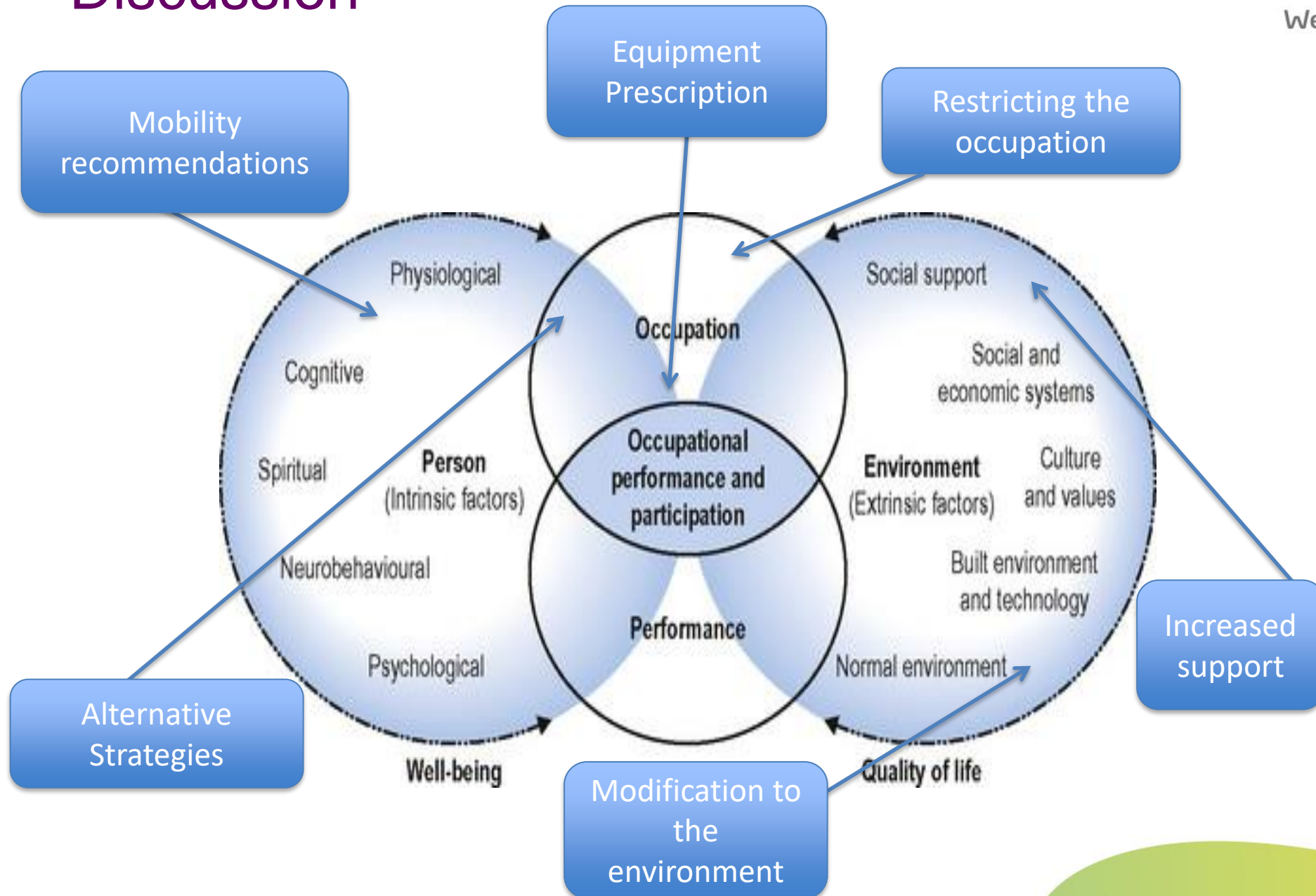


Results

Frequency of Type of Recommendations



Discussion



Discussion

- The HAP was a suitable outcome measure for home assessments completed for the inpatient aged care service.
- Risk reduction scores achieved highlighted the effectiveness of home assessment.
- OT staff made varied and individualised recommendations that were in line with the person, occupation, environment model of practice.
- This finding was consistent with and provided evidence for previously gained consumer feedback and conceptual definition that home assessments provided patients the opportunity to engage in meaningful occupations in a relevant context at the point of discharge.

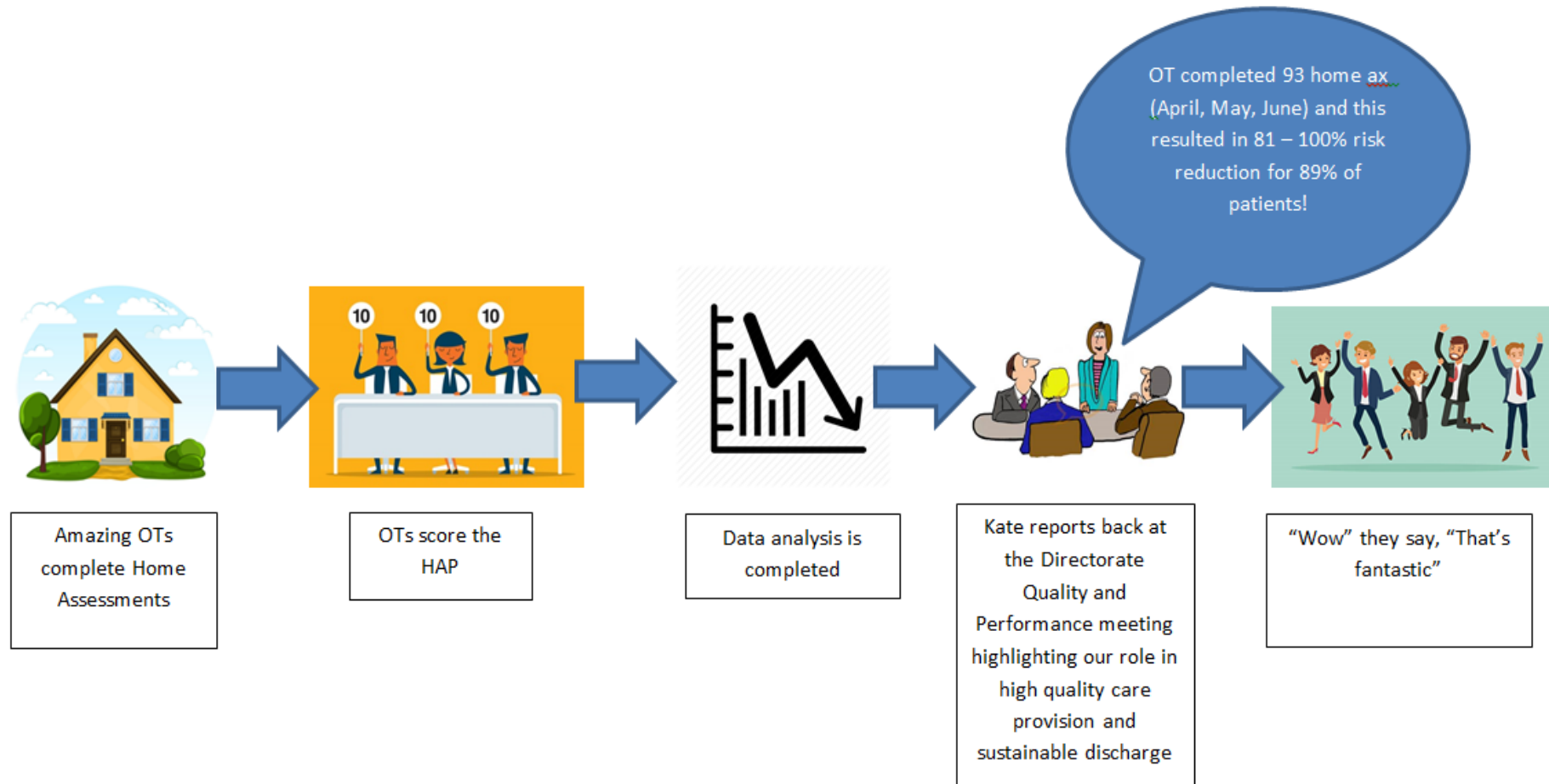
Limitations

- Discharge and re-admission rate
- Score based assumed reduction of risk
- Purpose of OT Home Assessment potentially impacting outcomes
- Experience /Grade level of OT contribution to recommendations

Future Directions

- Routine use of the HAP as a KPI
- Determination of actual reduction of risk based on implementation of recommendations
- Patients perceptions of OT Home Assessments
- Impact on discharge planning and readmission rates

What happens with your HAP scores??



Questions



References:

Chandler, J.M., Duncan, P.W., Weiner, D.K. and Studenski, S.A., 2001. Special feature: The Home Assessment Profile—A reliable and valid assessment tool. *Topics in Geriatric Rehabilitation*, 16(3), pp.77-88.

Strong, S., Rigby, P., Stewart, D., Law, M., Letts, L. and Cooper, B., 1999. Application of the person-environment-occupation model: A practical tool. *Canadian Journal of Occupational Therapy*, 66(3), pp.122-133.